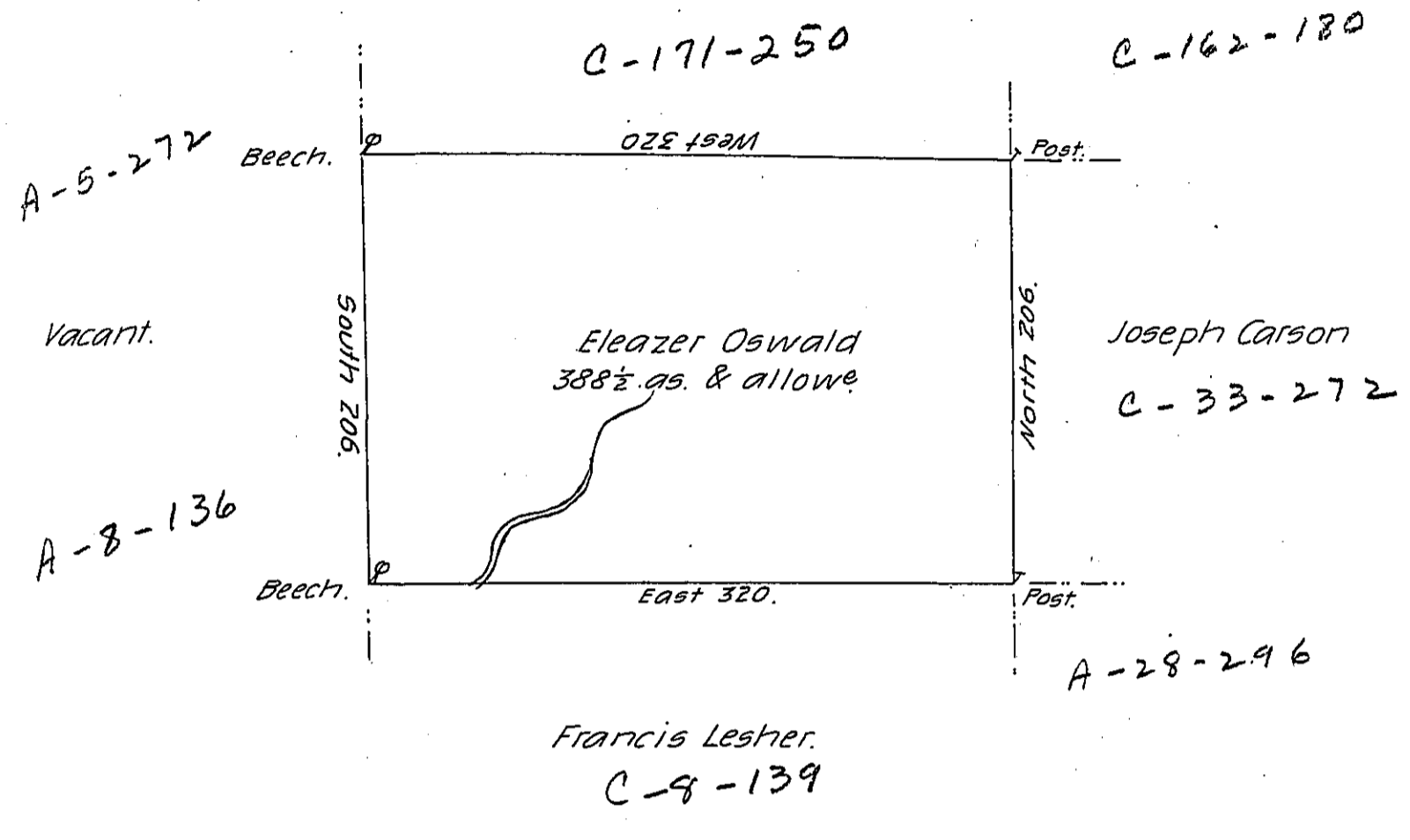


Elizabeth Roberdeau.



A draught of a tract of land Called— Situate on the head
 Waters of Wyolusing Creek Joining land surv^d for Eliz^h Roberdeau
 & others in Luzern (formerly Northum^d) County Containing three
 hundred & eighty eight acres $\frac{1}{2}$ & allowe of six P. Cent for Roads &c.
 Surv^d for Eleazer Oswald the 31 day of August 1787 in pursuance
 of a Warrant dated the 27th day of July 1787 by

Wm. Gray D.S.

To John Lukens Esqr.

Surv^t Genl.

IN TESTIMONY that the above is a copy of the original remaining on file in
 the Department of Internal Affairs of Pennsylvania, made
 conformably to an Act of Assembly approved the 16th day of
 February, 1833, I have hereunto set my Hand and caused
 the Seal of said Department to be affixed at Harrisburg,
 this twenty-seventh day of April 1906.

George B. [Signature]
 Secretary of Internal Affairs.